

Model VA-06 (3/4")



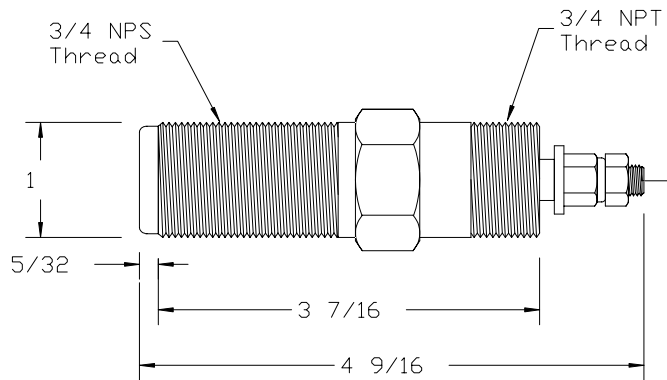
- For small hoppers, chutes, etc.
- Activates 2-3' diameter of material
- Threaded mounting style
- Uses approximately 0.45 cf per pulse @ 60 psi

VA-06 Airsweep and Mounting Options

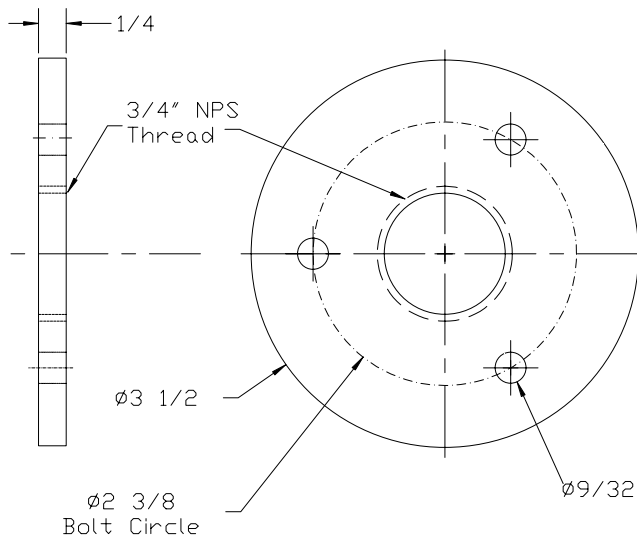
(all dimensions in inches)

Unit weight: 1 lb

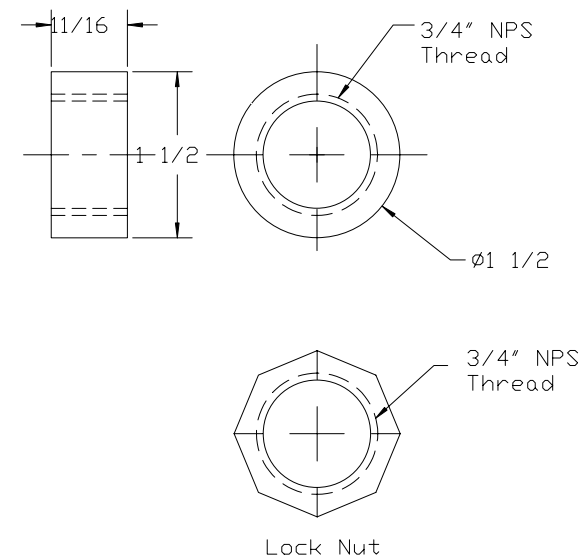
VA-06 Airsweep



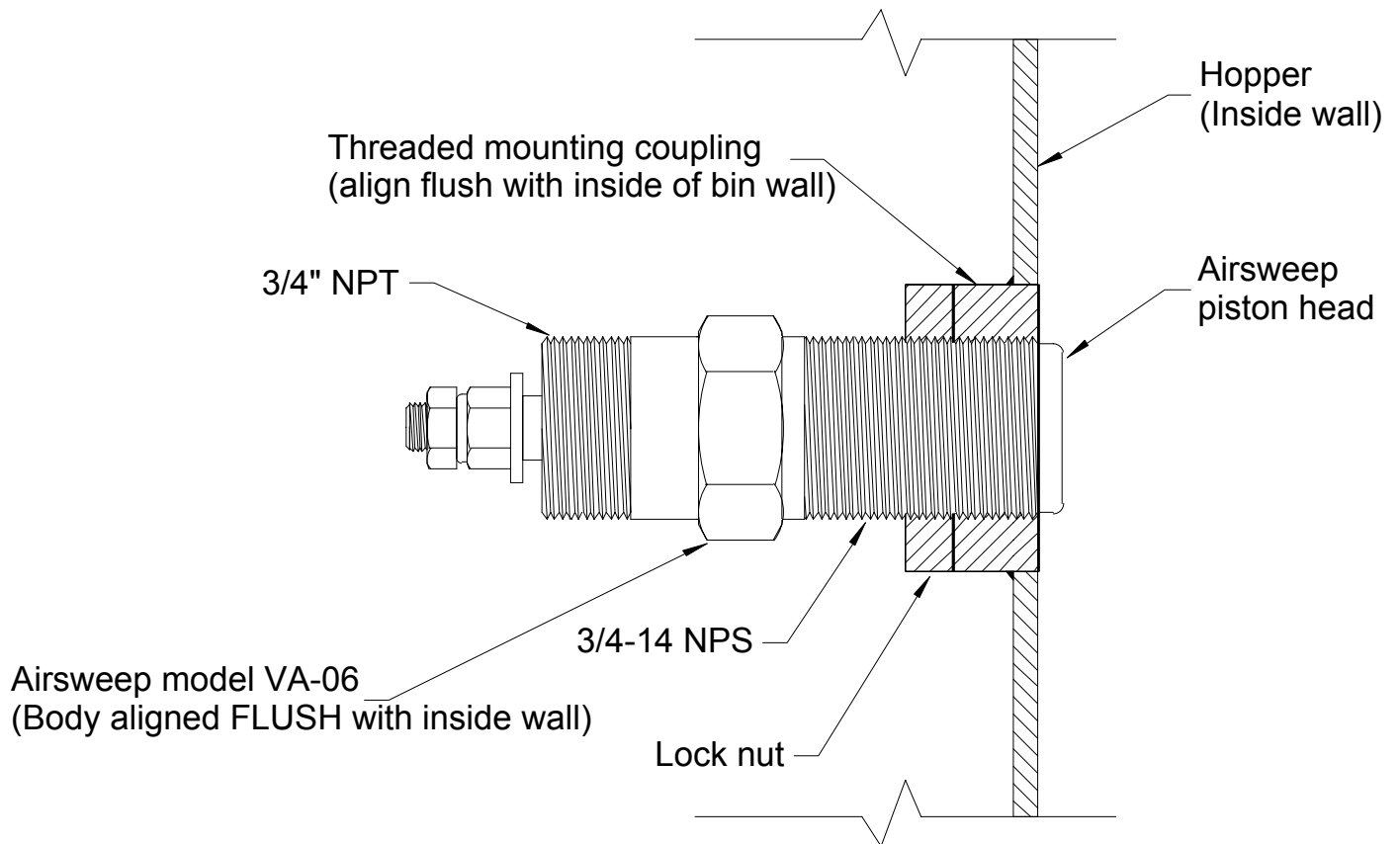
Mounting plate for flat surfaces (Bolt or weld to bin)



Curved surface Mounting Coupling (Weld to bin)



MC-06 Mounting Coupling Installation



Mounting Coupling Installation

1. Cut hole in hopper wall, diameter to fit ($1/8$ " greater than diameter of coupling is recommended to allow coupling to pass through curved wall).

Recommended Hole size for MC-06: $1-9/16$ "

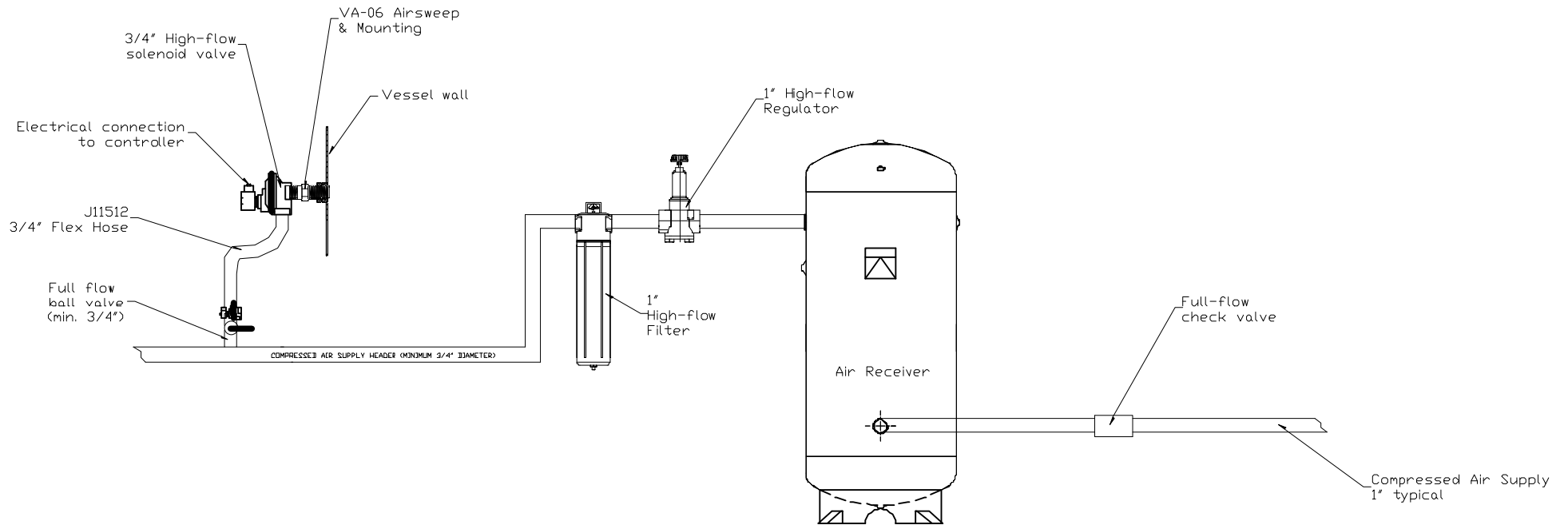
2. Align coupling flush with inside of vessel wall and weld continuous bead to exterior of wall.

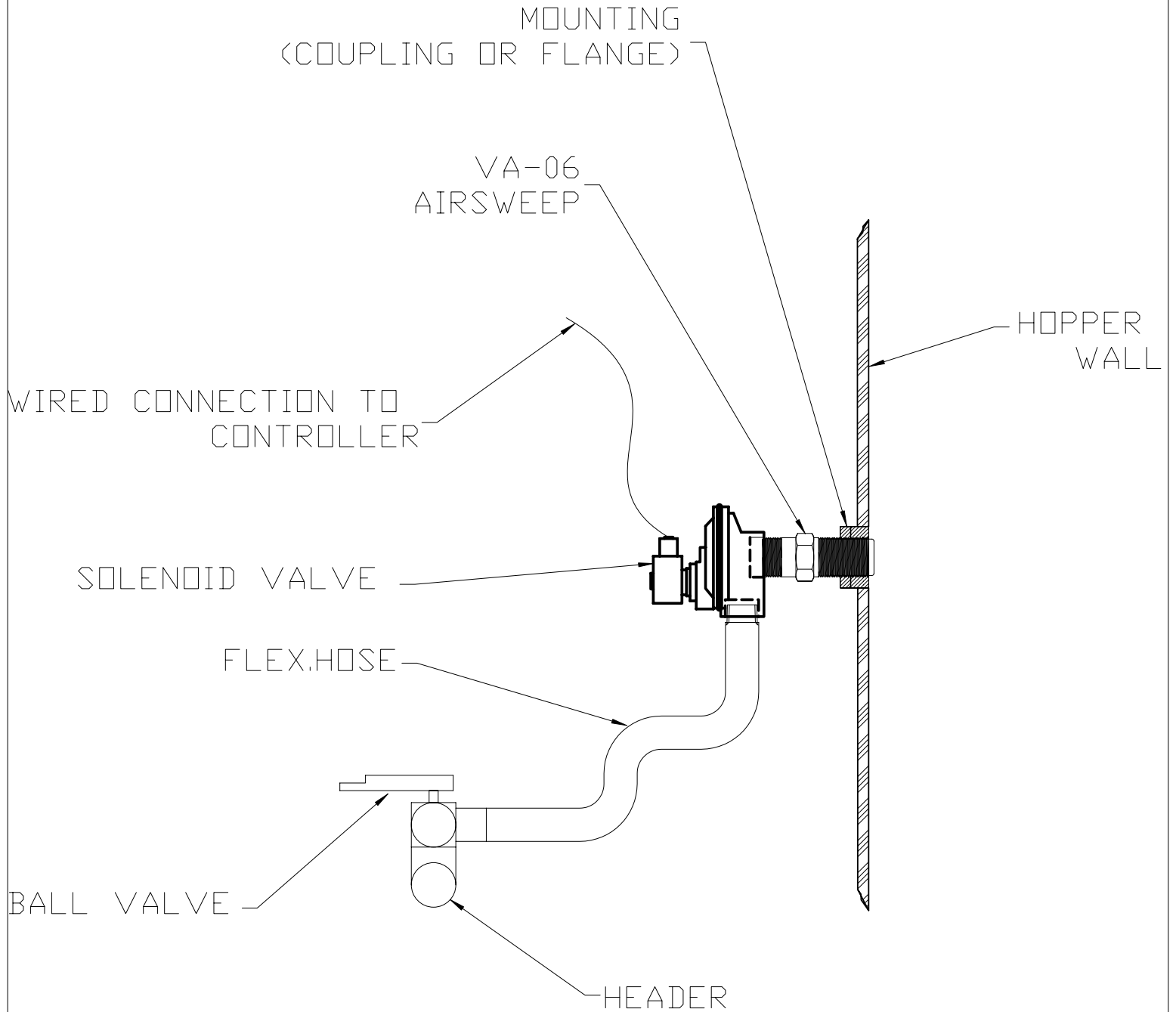
3. Apply anti-seize compound to front threaded section of Airsweep. Thread Airsweep into position, so that front of **body** of Airsweep is aligned with front of coupling. This will properly position piston head within the bin.

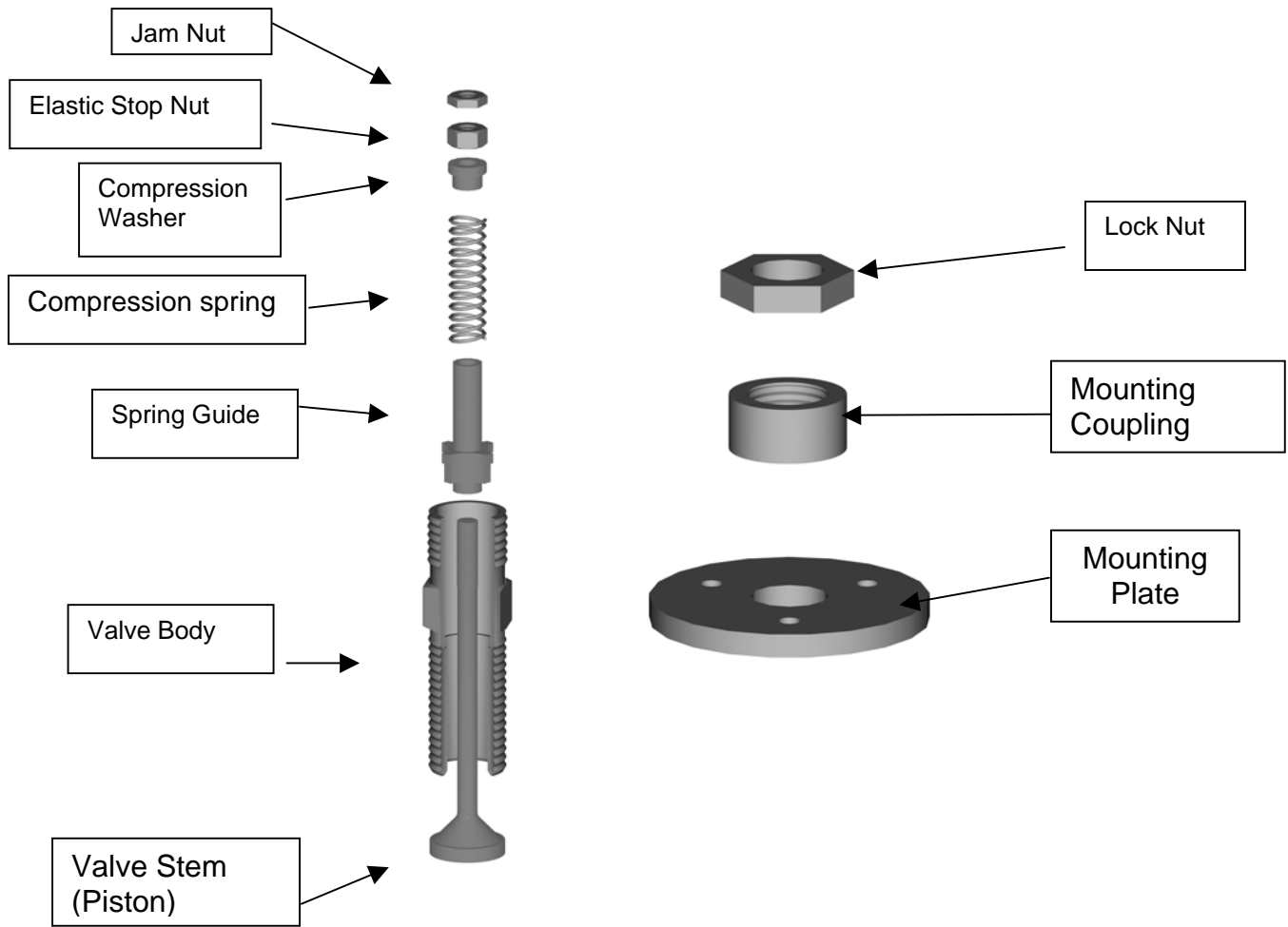
4. After position of Airsweep is determined to be correct, tighten lock nut against coupling to keep Airsweep in position.

Note: On sharply curved bin walls, body of Airsweep will extend slightly into the bin at top & bottom (12:00 & 6:00 positions), and should be flush at sides (3:00 & 9:00 positions).

Typical Piping and Accessories, VA-06 Airsweep System







VA-06 Airsweep[®] assembly and mounting

Qty	Description	Part Number (carbon steel)	Part Number (stainless steel**)
1	Valve Body	VB-06	VB-06-SS
*1	Valve Stem	VCW-06	VCW-06-SS
*1	Spring Guide	SG-06	SG-06-SS
*1	Compression Spring	CS-06	CS-06-SS
*1	Compression Washer	CW-06	CW-06-SS
*1	Elastic Stop Nut	ESN-06	ESN-06-SS
*1	Jam Nut	JN-06	JN-06-SS
1	Mounting Plate	MP-06	MP-06-SS
1	Mounting Coupling	MC-06	MC-06-SS
1	Lock Nut	LN-06	LN-06-SS

Note: (*) denotes part included in rebuild kit.

Order RK-06 for carbon steel construction, RK-06-SS for stainless steel construction.

**304 Stainless steel is standard. Other grades must be specified when ordering.

TYPICAL OPERATING PARAMETERS / COMPRESSED AIR CONSUMPTION

VA-06 AIRSWEEP

Recommended Operating Pressure Range: 40-60 psi

Typical effective radius of material activation (dry, powdered material, 60-75lbs/ft³):
1 to 1.5 feet around each nozzle

Typical recommended pulse time: 1/4 second.

Approximate per pulse consumption rate (1/4 sec. pulse): 0.45 cubic feet @ 60 psi.

Typical sequence rate range (application/material dependent): 3 pulses - 12 pulses per minute.

Typical (approximate) consumption rate range (based on the preceding typical sequence rate range):
1.35 - 5.4 cfm @ 60 psi.

